



Australian
Landcare
International

Australian Landcare International (ALI) is an incorporated, not-for-profit organisation whose aim is to assist other countries to manage their natural resources using a Landcare approach.



March 2018

President's message.

With this issue of the ALI newsletter, Horrie Poussard says goodbye to active and detailed promotion of Landcare overseas. He will remain in ALI, and I feel sure be there to consult and advise.

Now in his late seventies, he can look back with great pride on his career, family, friendships and achievements. Horrie grew up in Melbourne and did bachelor's and master's degrees in agriculture at Melbourne University. A consultant to graziers in NE Victoria, he went on to a three year consultancy in South Korea for the Australian government in the early 1970s. This shaped his outlook, and that of his wife Wendy, who, with strong support from the family, became an esteemed figure in aid projects in the Pacific and Asia through co-founding the International Women's Development Agency.

Perhaps Horrie will be best remembered for working closely with Joan Kirner, Minister for Conservation, Forests and Lands, to launch Landcare in 1986.



Joan wanted a community-based environmental program that reflected the multi-disciplinary nature of her department, then still finding its feet. Horrie and Bob Edgar came up with the idea of a new, more independent, community based, district-scale, action-

oriented entity under the useful, indeed inspired, term 'Landcare', and the idea took off. When Horrie ended his stint as Victoria's first state Landcare co-ordinator two years later, there were probably 20 groups operating enthusiastically, and the idea was echoing through Canberra corridors.

Later years saw Horrie and Wendy living in Hanoi and Suva, working on aid projects. And – little-known facet – a conversation between him and Dr Dennis Garrity of ICRAF undoubtedly accelerated the advent of Landcare to the Philippines and East Africa.

In 2008-09, he was a founder of ALI, with myself, and for eight years a real treasure, the secretary/treasurer. He helped launch our Overseas Landcare Fund and put out 35-40 newsletters. Thanks indeed, mate, for a wonderful effort. I have valued greatly your loyalty, advice, experience and prudence.

One thing troubles Horrie: my presidential messages are too long and complex – unlike a rather more famous and important president, renowned for his Twitter activities. In exactly 280 characters, here is contemporary ALI:

Caribbean training May St Kitts; internal capacity-building – ta Megan R; Nepal interested in Landcare; OLF admin – payouts, ta Malachy T; post-Nagoya items – an Asia-Pacific training program? more AJF funding?; firming up the global Landcare network – a Nagoya

request; getting a professional well-funded Landcare bureau in Oz.

Thanks especially to Horrie, this is where we are now – an experienced, productive, resourceful and thrifty NGO that could help Australia make much more geopolitically and socially of its landcare experiences and insights.

Stick around, pay your membership fees and help ALI make things happen.

Rob Youl

President

robmyoul@gmail.com

m 0407 362 840

Recent news

Global Landcare Alliance

The idea of a global body to promote the development world-wide has been around for a few years based on the ideas of Dr Dennis Garrity, President of Landcare International(LI). Dennis has been actively involved in promoting land protection programs at a global level through the UN and other key international bodies. Recently the idea of a Global Landcare Alliance (GLA) resurfaced and representatives of Landcare International, including several Australians, progressed the discussion. One of the original ideas was that

GLA is an independent not-for-profit collection of like-minded groups interested in promoting a Landcare

approach to land and water management throughout the world.

Already there is a multinational African Landcare Network in existence and it was thought that other Networks could be developed for Europe, Asia, Oceania, North and South America.

A global organisation could develop the status and skills to deal effectively with global and multinational organisations for better policy, programs and funding for Landcare activities. Much thinking and work still to be done on the GLA.

Caribbean



Andrea Mason facilitating at the last Caribbean workshop in Jamaica in 2015.

ALI will be supporting a second Caribbean Landcare workshop in May at St Kitts-Nevis. Rob Youl and Andrea Mason will be going as volunteers to work with local agencies and a team

from the University of Wolverhampton in the UK led by Professor Mike Fullen. There is a strong link between West Indians who migrated to the UK Midlands many years ago and their former homelands. Participants will be local farmers and agency staff and the program will cover topics including sustainable farming through Landcare, community readiness for disasters and resilience, and linking young people to the environment.

Nepalese visit to discuss Landcare

A group of government staff from Nepal recently visited Australia and made a specific journey to Melbourne to discuss Landcare with ALI members Andrea Mason and Horrie Poussard. They were a high level delegation from a major program being implemented in Nepal to improve the food security of that country. Led by Prabhu Budathori, a senior Agriculture Policy advisor, the group discussed ways to use a Landcare approach to help mainly small scale farmers to work together with information sharing, machinery allocation and crop marketing. The group felt that ALI could be a helpful support into the future to guide the program which has strong government backing in Nepal.



The meeting was assisted by visiting US former adviser, Hank Tyler, who had strong links with Prabhu in Nepal over the years. Hank , by chance, was visiting Melbourne on family business and welcomed the opportunity to assist. We are hoping that ALI can play a future role in supporting this important food security program.

2018 Crawford Fellowships

One of our partners, The Crawford Fund, is now calling for nominations for their regular Fellowship.

The Fellowship is offered to an agricultural scientist below the age of 35 years who is a citizen of, or who is working in, one the following countries: Bangladesh, Bhutan, Burma, Cambodia, East Timor, Fiji, Indonesia, Laos, Nepal, Niue, Papua New Guinea, Samoa, Solomon Islands, Tonga, Tuvalu and Kiribati, Vanuatu, Vietnam.

The Fellowship is to provide further training of a scientist in agriculture, fisheries or forestry from selected developing countries, whose work has shown significant potential. The training will take place at an Australian agricultural institution and will emphasise the application of knowledge to increased agricultural production in the Fellow's home country.

Nominations for the award should be made by at least two persons, other than the nominee, with experience in agriculture and who have a good knowledge of the nominee's background. The first proposer must be an Australian and the second proposer should be the

Officer-in-Charge of the nominee's Institute or Department. Please note that self-nomination is not possible.

For terms and conditions please follow this link: [Terms and conditions 2018 Fellowship](#)

Nomination forms can be obtained by contacting The Crawford Fund [via email](#) and need to be submitted by 30 March 2018.

Our Overseas Project Partners

ALI takes pride in our selection of partners in international Landcare, particularly in developing countries. This is the first of our key local partners in our Overseas Landcare Program.

GIERI in the Democratic Republic of the Congo (DRC)

In the French speaking DRC , we made contact with Patrick Kaka early on and his project to revegetate 8 hectares of degraded land near the capital Bukavu with local community members turned out to be the first project ALI supported under our Overseas Landcare Program . GIERI (*Groupe d'Intervention Pour l'Encadrement Et La Rehabilitation Integrale*, or, *Intervention Group for Farming and Integral Rehabilitation*) is a non-profit organization registered in the DRC since 1997.

Headquartered in the city of Bukavu, DRC, the goal of their work is to develop methods to sequester carbon and reduce total environmental emissions in the region. They work by engaging the local population in a long term effort to manage the forest and its resources for

growth and sustainability while generating tangible benefits and income. Patrick Kaka, the Coordinator and Executive Director of GIERI has an enthusiastic approach while coping with incredible pressures.



Patrick Kaka with his Emerging Landcare in Africa award 2014

The area is very unstable and unsafe - not only from biophysical risks like the ticking time bomb of the methane bubble sitting under Lake Kivu, but also militia conflict.

In a second GIERI project that ALI funded Patrick explained that

Bushushu is a region located on the shores of Lake Kivu; It is a mountainous region. The site is sloped to reforest with small hills sides. There is a river that causes some flooding. Before the arrival of Rwandan refugees; there were anti erosion trees but refugees destroyed all the vegetation in search of wood for heaters and embers to cook food. We will use the contour technique for reforestation of the hills that have been

deforested by refugees since 1994 and the War of Kabila in 1998.

Clinton Muller, ALI committee member, who worked on Landcare activities in Africa with the World Agroforestry Centre (ICRAF) in Nairobi said that:

The Landcare activities in eastern DRC around Bukavu are pretty exciting - Landcare as an approach was introduced there by Emilie Smith. Emilie is a French national and works at ICRAF, so is fluent in French and was great to plant the concept of Landcare in the community. We wanted to get Emilie back to Bukavu for follow up - but it was considered too unsafe to do so.

In the absence of any external intervention, Landcare has developed within the community and is a core feature of Patrick's GERI.



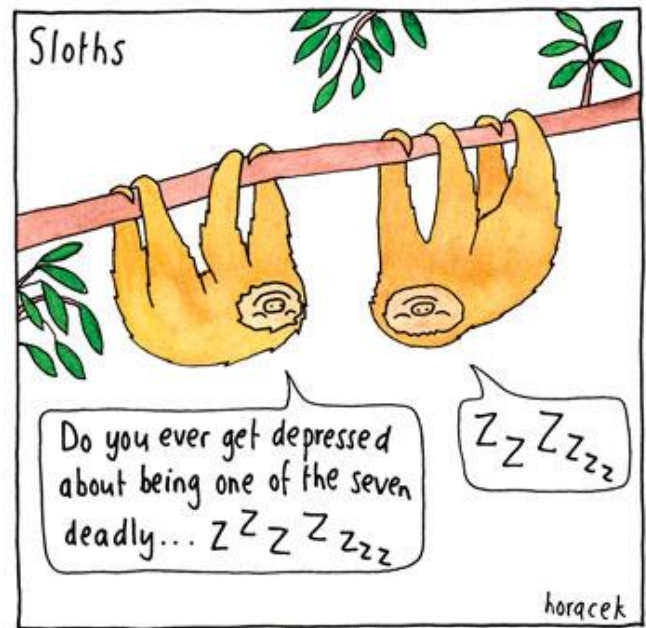
Eroded sloping land at Bushushu

GIERI are on their third project supported by ALI funds, again in the Bushushu area. They are planting 1000 tree seedlings grown from a local village nursery. Landcare training is an integral part of the project. See www.gieri.org

Sign up as a member

ALI membership is still only \$20 per annum and free for students and under 25s. Landcare groups pay \$40 per year. Membership helps us with funds for doing all those little but important things that keep our not-for-profit organisation ticking over. Membership also allows us to present a case to donors and government that ALI is a significant organisation doing worthwhile things with overseas communities.

We are always happy to see new members supporting ALI. We now have more than 50 members on our books and would love to have more. If you know of anyone who would be interested in what we do, please mention ALI to them.



Another great cartoon by Judy Horacek

ALI Committee

President : Rob Youl

Vice President : vacant

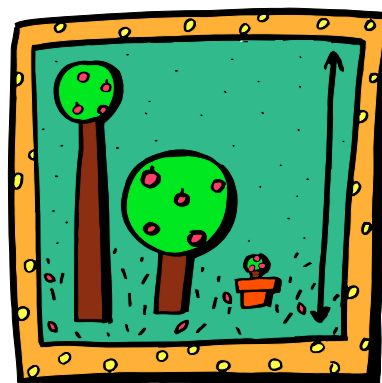
Secretary : Sandra McPhee

Treasurer : Phil Horner

PR : Andrea Mason

Projects : Malachy Tarpey

Committee: Ian Oxenford, Megan Rowlatt, Andrea Mason, Clinton Muller,





Become a member of ALI. Your membership helps ALI keep up with what is happening globally and supports our website and other office costs.

THE BENEFITS OF ALI MEMBERSHIP

- Using your Landcare experience to assist overseas groups
- Overseas contacts for future travel
- Developing links with possible sister groups overseas
- Being part of a world-wide movement for land, biodiversity and community improvement
- Regular e-newsletter on overseas Landcare developments

ANNUAL MEMBERSHIP

Student or under 25	Free
Individual	\$20
Landcare or community group	\$40

Name/Group

Address

P/C

Email

Interested in volunteering some time? Yes

☐

We need help with admin, publications, PR, etc.

Type of membership (x) :

Student or < 25

☐

Individual

☐

Group

☐

Return with cheque (where required) to:

ALI: Treasurer

17 Lookout Rd Kalimna , Vic. 3909

Or direct Bank Transfer to Bendigo Bank

Acct: Australian Landcare International. BSB 633-000 Acct 1331 03598

And send details to treasurer@alci.com.au