



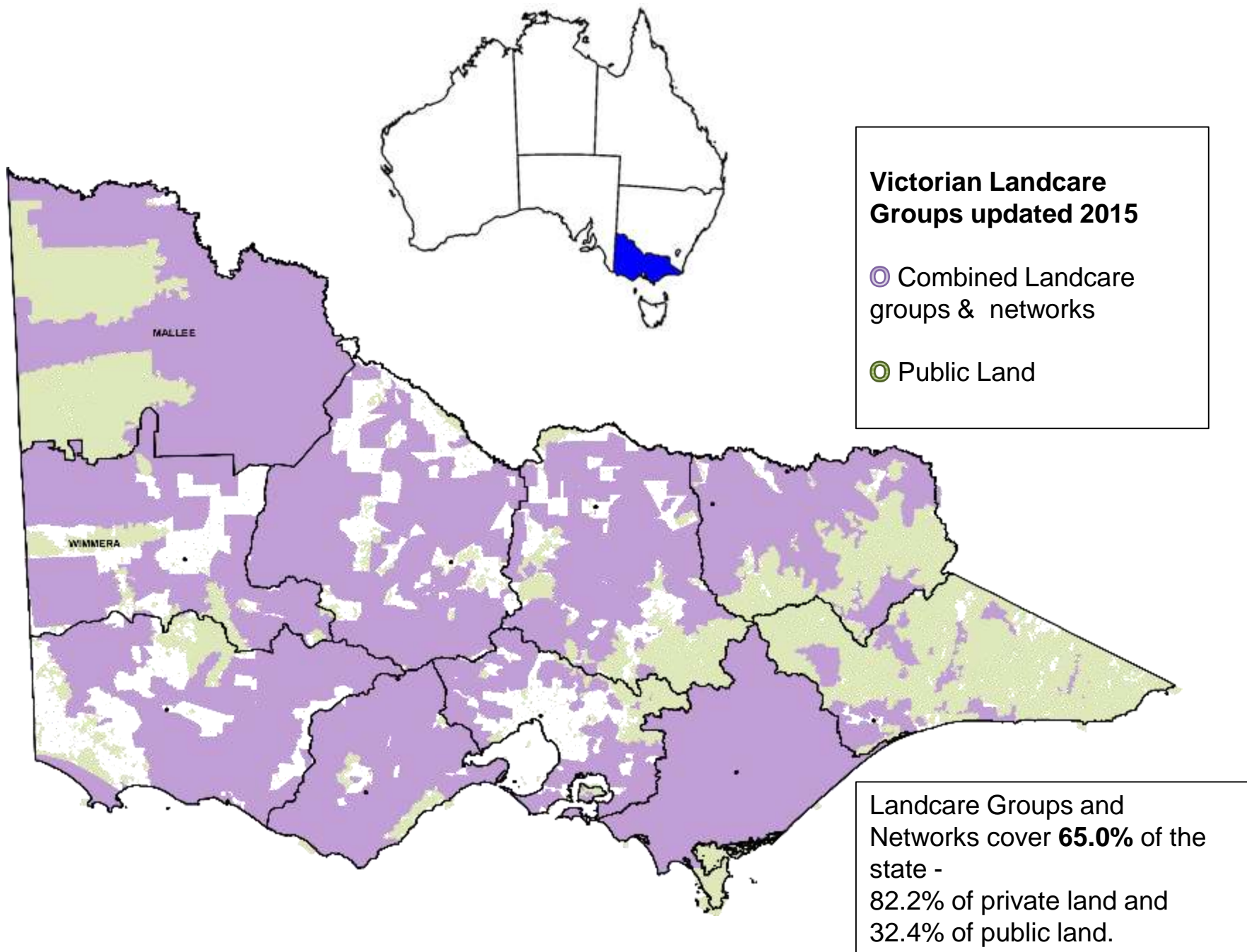
Landcare
Victoria Inc

“The Meaning of Support”

Dr Kaye Rodden, Deputy Chair, Landcare Victoria Inc & Mr Terry Hubbard OAM,
Chair, National Landcare Network & Landcare Victoria Inc.



Photo – Beth Ripper





Landcare
Victoria Inc

“Landcare is driven by its membership and thereby empowers participants to address issues of common interest. Their individual human and accumulated social capital bring skills and expertise as well as cohesiveness and trust to the work of the group, and these are qualities essential for enterprise development as well as NRM”.

Bernie Wonder (2014) Smallholder value chains for food security

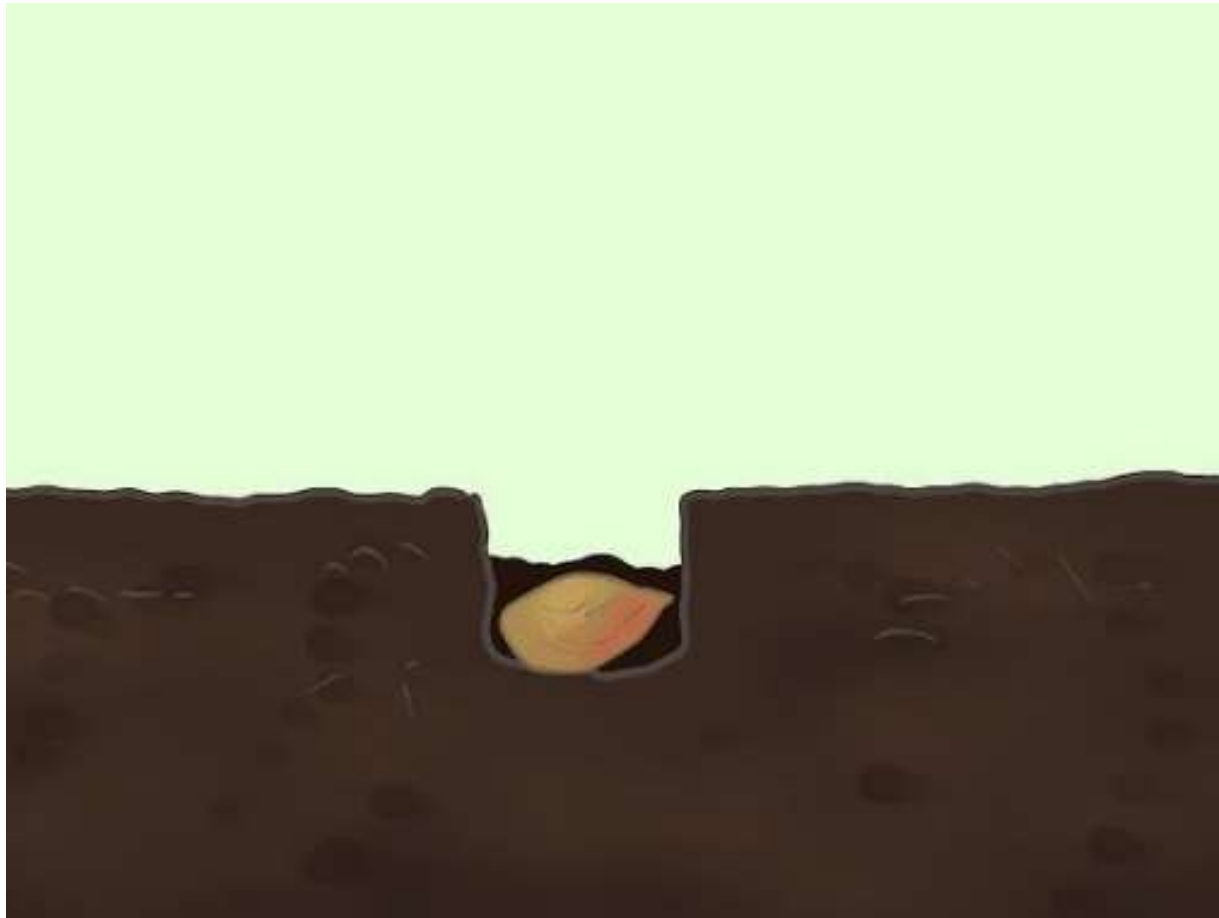
<http://aciar.gov.au/aifsc/projects/landcarebased-approach-food-security>.







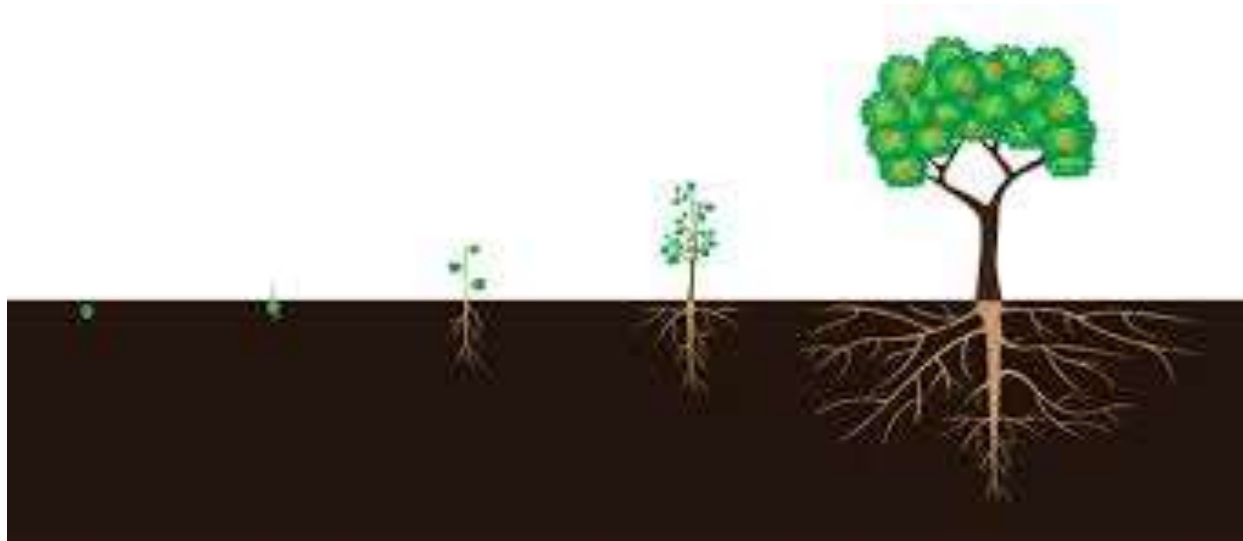
Landcare
Victoria Inc







Landcare
Victoria Inc



**Strong
community base**

Shared priorities

On going support

**Resilient, self reliant
community**



Landcare
Victoria Inc



BEFORE



AFTER

My husband!

and..... THE LANDSCAPE NOW





Landcare
Victoria Inc





Landcare
Victoria Inc





Landcare
Victoria Inc





Landcare
Victoria Inc

But it was a community effort!





Landcare
Victoria Inc

Identify the productive soil that has a good seed bed
– **a community with a vision**





Landcare
Victoria Inc

Determine what to add – what resources are needed





Landcare
Victoria Inc

Too much and the community is swamped and loses its independence





Landcare
Victoria Inc

Too little and the community withers and loses traction





Landcare
Victoria Inc

COMMUNITY ENGAGEMENT

- o “Informing of the community of policy directions of the government.*
- o Consulting the community as part of a process to develop government policy, or build community awareness and understanding.*
- o Involving the community through a range of mechanisms to ensure that issues and concerns are understood and considered as part of the decision-making process.*
- o Collaborating with the community by developing partnerships to formulate options and provide recommendations.*
- o Empowering the community to make decisions and to implement and manage change”.*



Landcare
Victoria Inc





Landcare
Victoria Inc


Credit where credit is due





Landcare
Victoria Inc

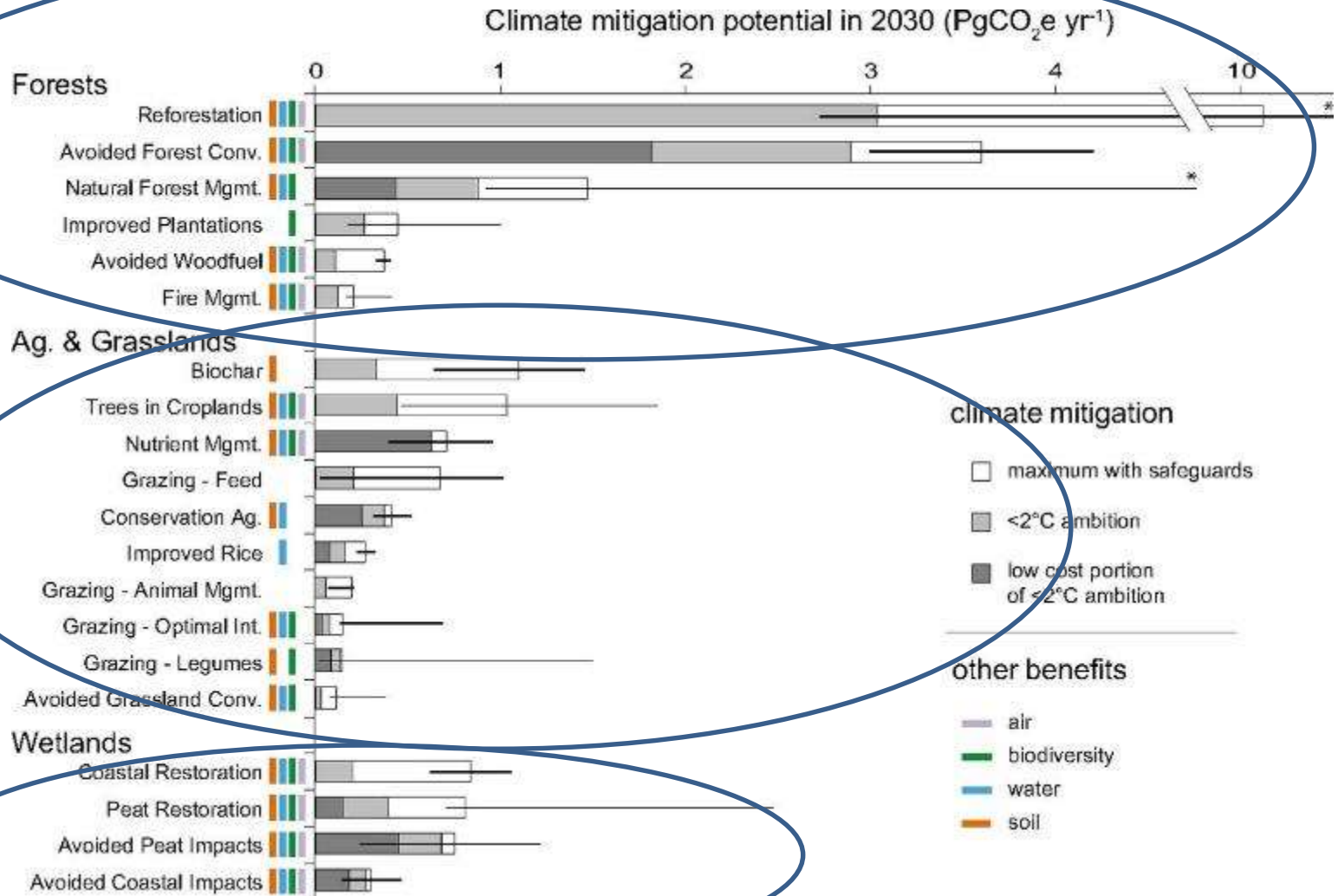




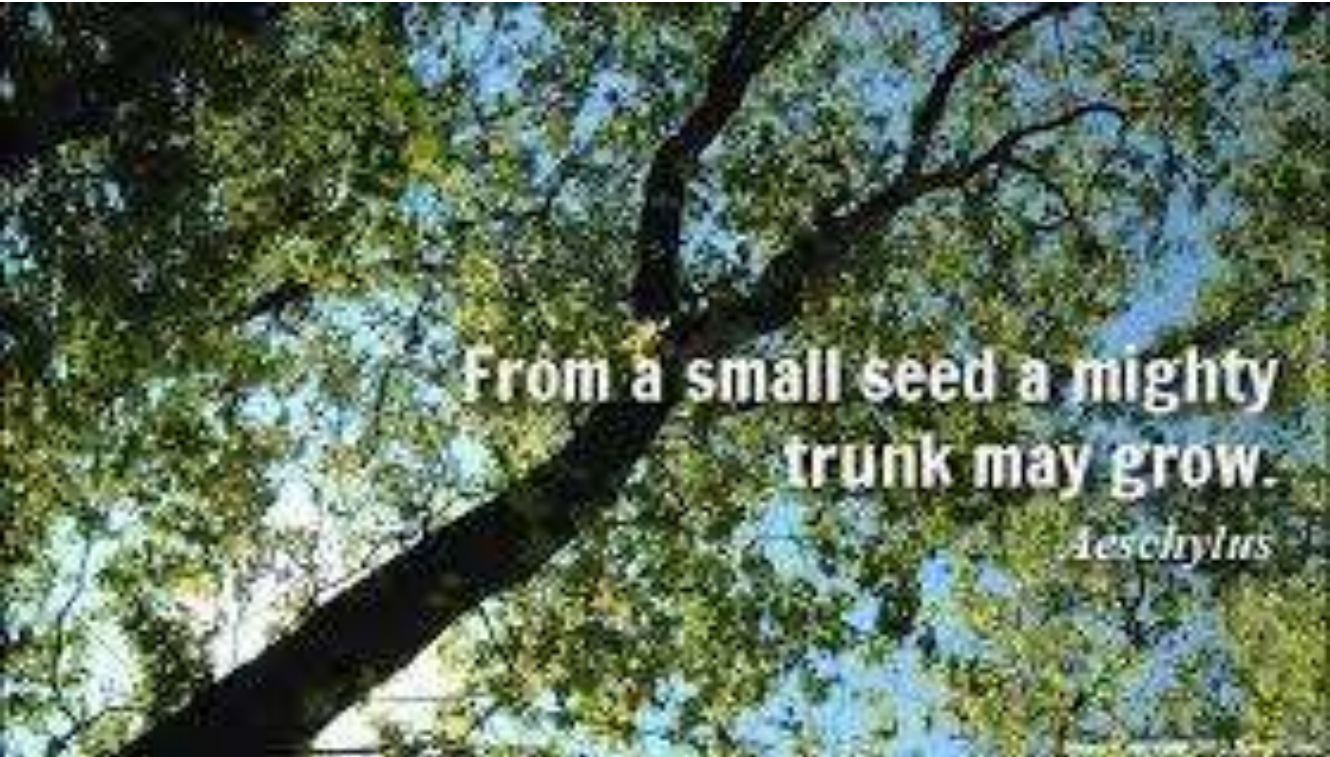
*"the independent
representative body for
landcare in Victoria"*

LANDCARE VICTORIA Inc.

Climate mitigation potential of 20 natural pathways.



Bronson W. Griscom et al. PNAS
doi:10.1073/pnas.1710465114



From a small seed a mighty
trunk may grow.

Aeschylus

THANK YOU



Photo – Geoff Anson

Kaye Rodden nidgee@reachnet.com.au