

“Fostering the ability to look after our own backyard”

Sonia Williams

State Landcare Facilitator, Landcare NSW

Global Resilience through Self Reliance – The Landcare Model
Session 1 – The Critical Role of Self Reliance in achieving
Global Sustainability

1st International Conference of Landcare Studies
5-8 Nov 2017 Nagoya Japan



Self reliance

***“reliance on one's own powers
and resources rather than those
of others”***



Many Hands, One Voice
MANY HANDS, ONE VOICE

Harnham Landcare - a journey







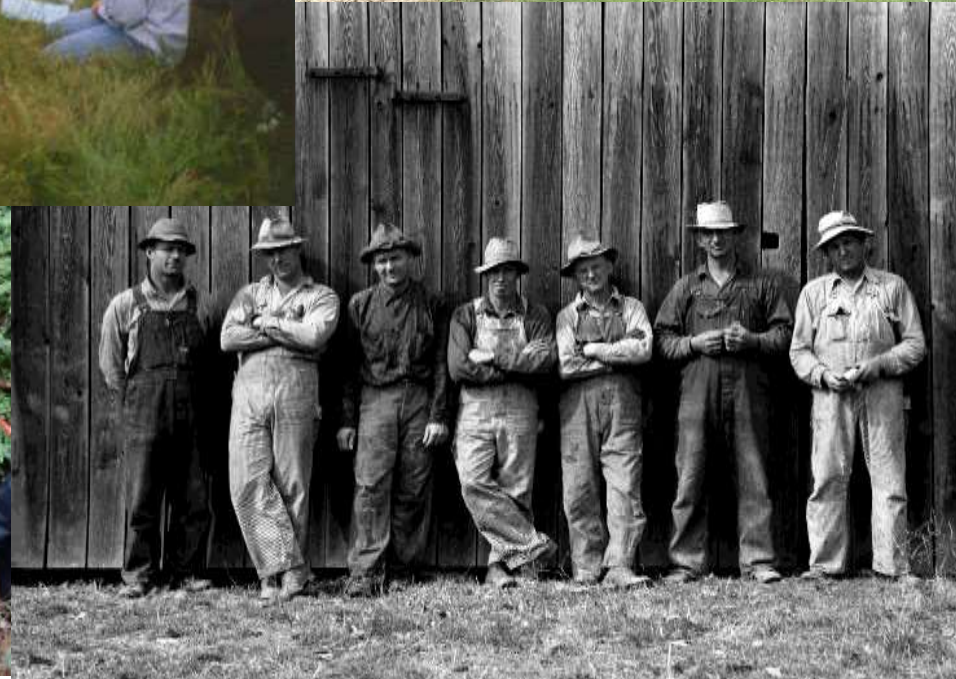




Understanding Landcare and what makes it work



Landcare - The PEOPLE in the landscape



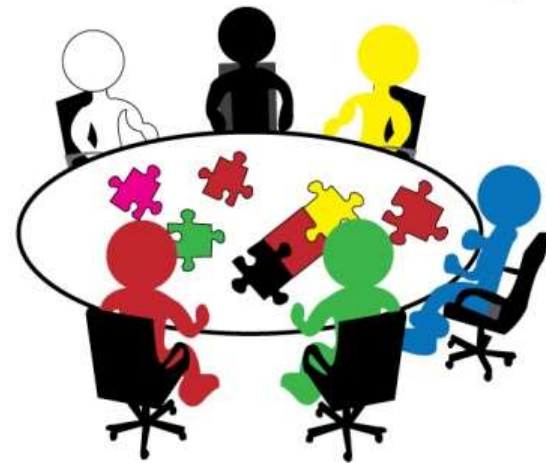


Supporting communities through the Landcare model

Community Engagement or Engaged Communities - what's the difference ?

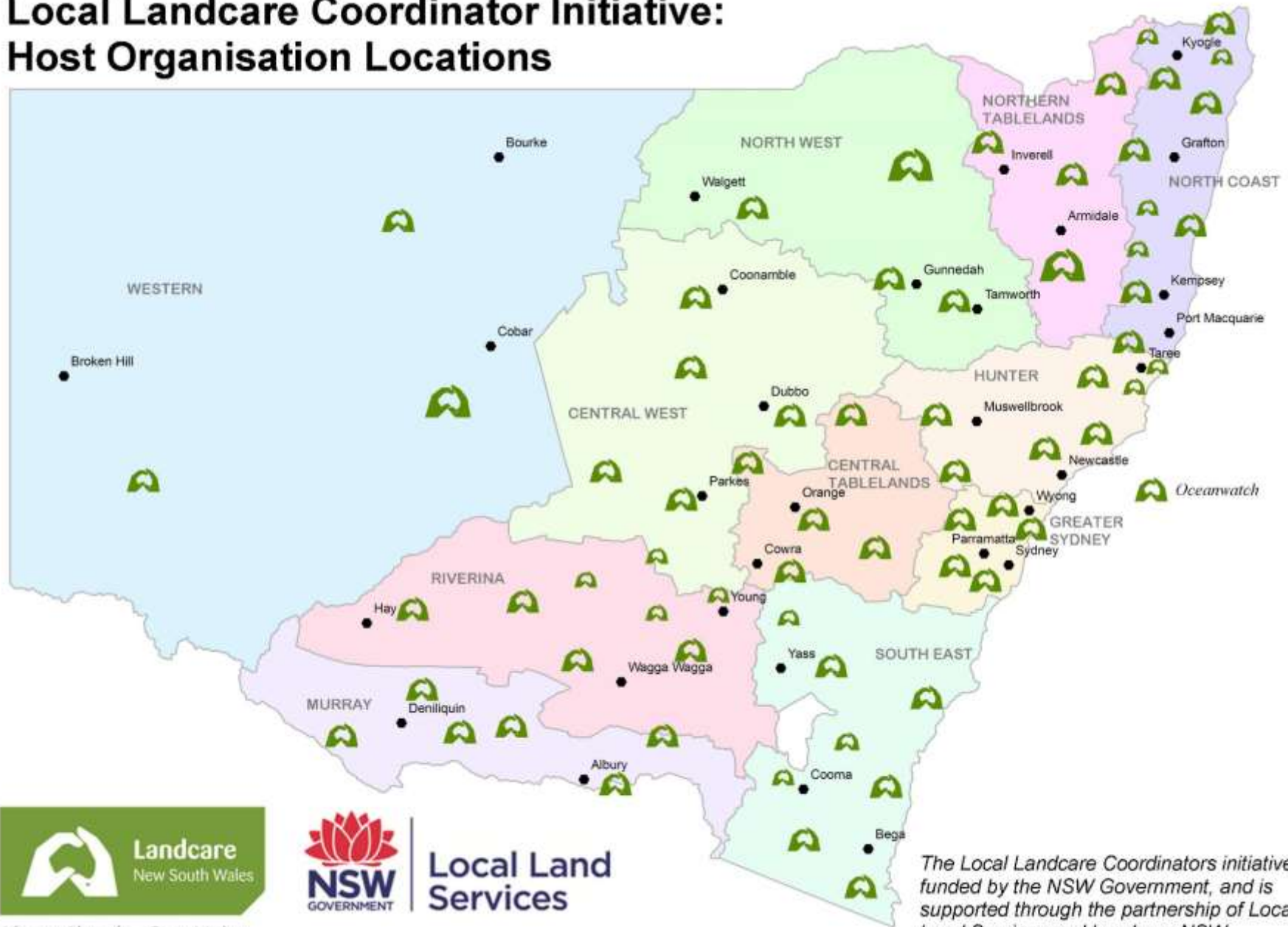


Community Engagement –
delivering to



Engaged communities –
building with

Local Landcare Coordinator Initiative: Host Organisation Locations



Many Hands, One Voice

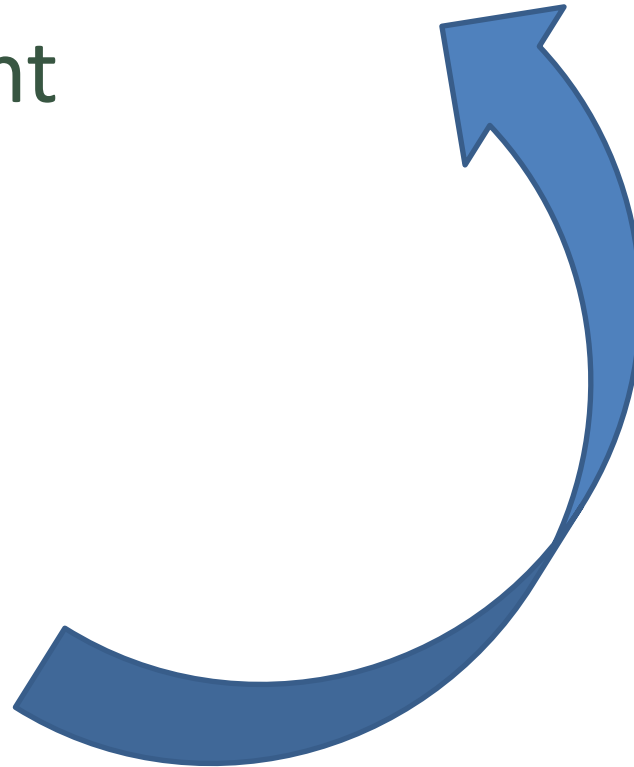


**Local Land
Services**

The Local Landcare Coordinators initiative is funded by the NSW Government, and is supported through the partnership of Local Land Services and Landcare NSW.

The People Business

- P** Place (members interests and priorities)
- E** Encouragement
- O** Ownership
- P** Partnerships
- L** Laughter
- E** Evaluation



Many Hands, One Voice
MANY HANDS, ONE VOICE



Why Landcare works

1. It builds upon a sense of **COMMUNITY**
2. It deals with **LOCAL CURRENT ISSUES**
3. It undertakes **EXPERIENTIAL LEARNING**
4. It provides **SUPPORT** from staff and resources who are embedded in their community
5. There is **TRUST & ACCEPTANCE** when information is generated by other landholders
6. There are processes which develop **OWNERSHIP** of the issues and the solutions
7. It values **PARTNERSHIPS** based on equality and respect
8. Works from a **BOTTOM-UP** process that creates more interest and motivation.

