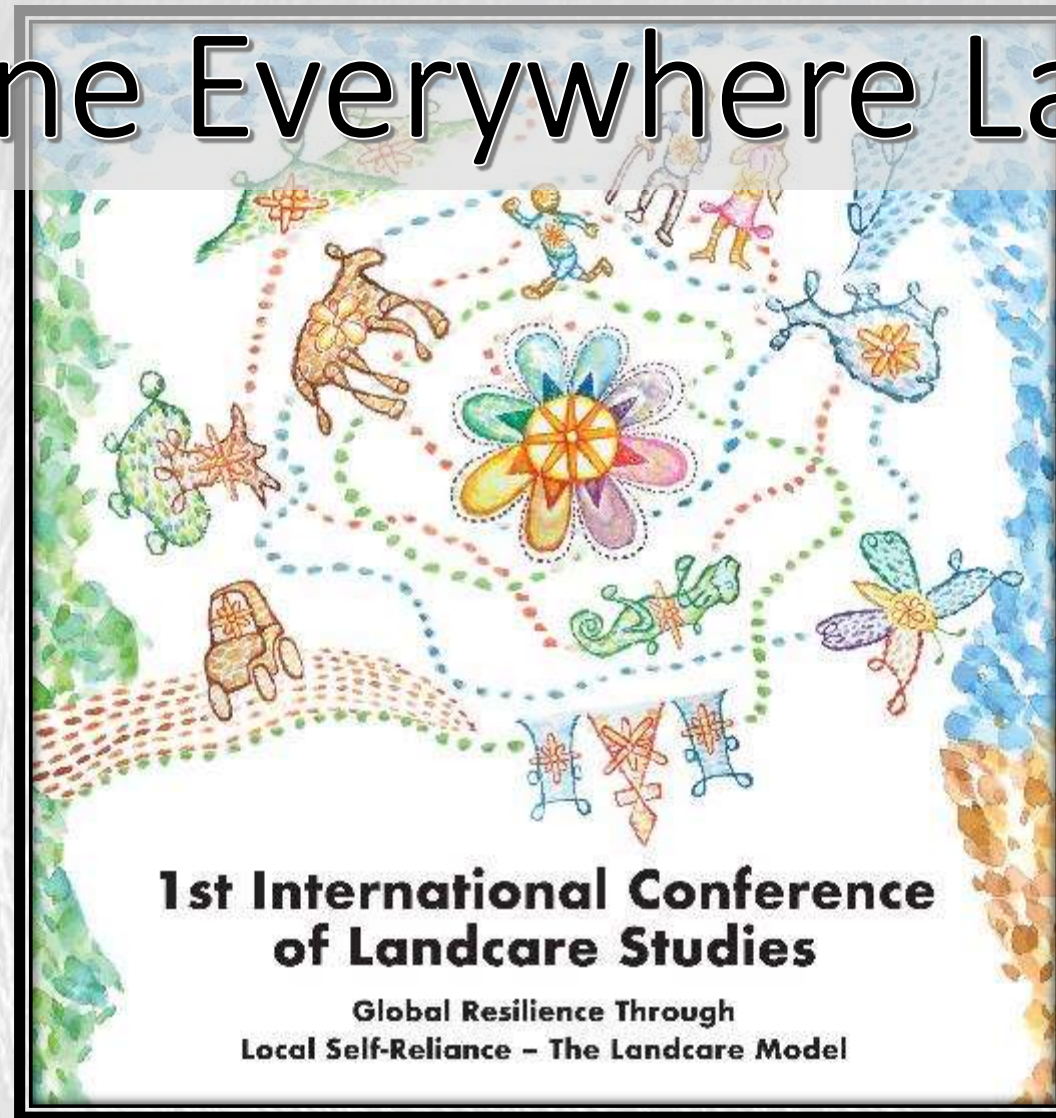


Everyone Everywhere Landcare



Session 2: What makes local self reliance deliver on sustainability

Andrea Mason

A bit about me!

Landcare

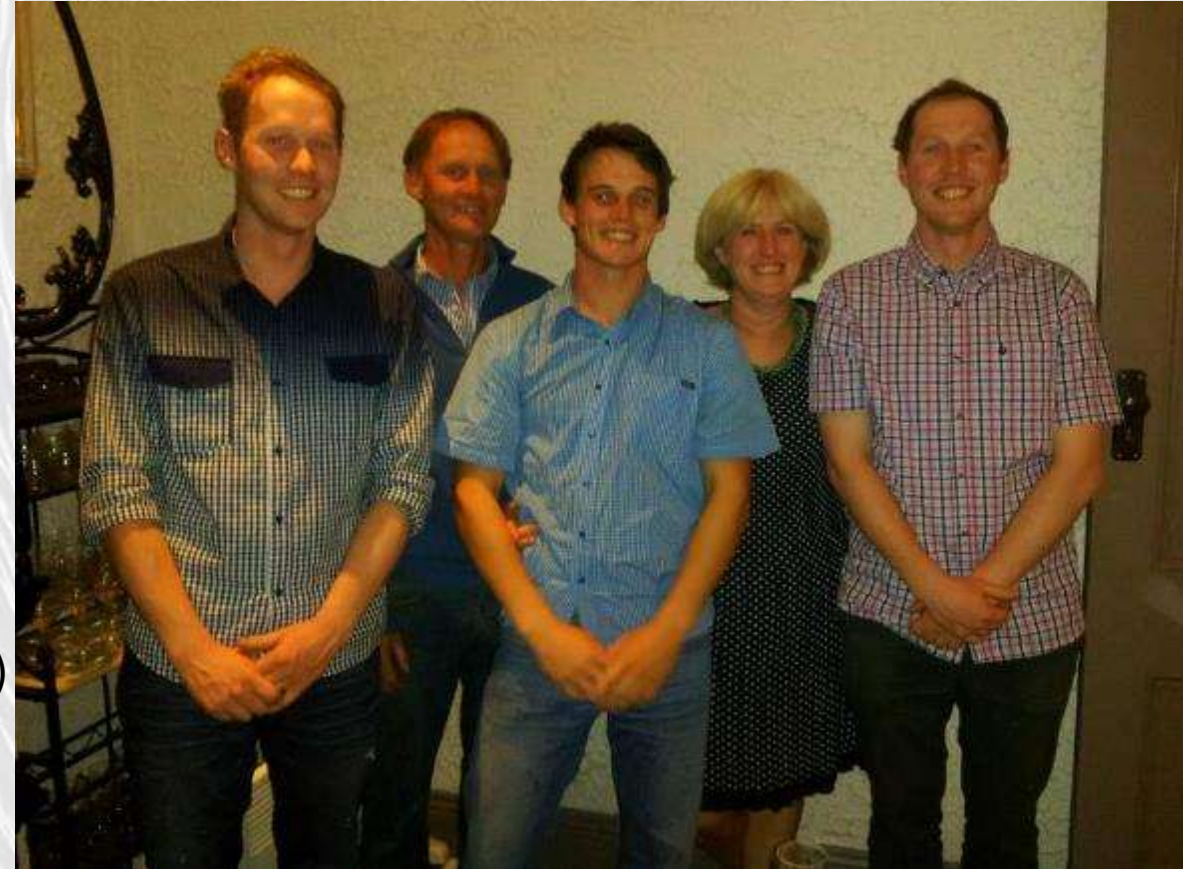
- Landcare practitioner for 24 years
- Small acreage farmer
- Director of Finding North_Aspects of Sustainability
- Board member Upper Williamson's Creek Landcare Group
- Chairperson Leigh Catchment Group
- Board member Australian Landcare International

Sustainability

- Board member of Buninyong Sustainability – FORP
- Member, Ballarat Renewable Energy & Zero Emissions (BREAZE)
- Director of the Smart Building and Living Expo

And

- *Occasionally I spend time with my husband and three grown sons!!*



Resilience - People and things that are resilient are able to recover easily and quickly from unpleasant or damaging events.

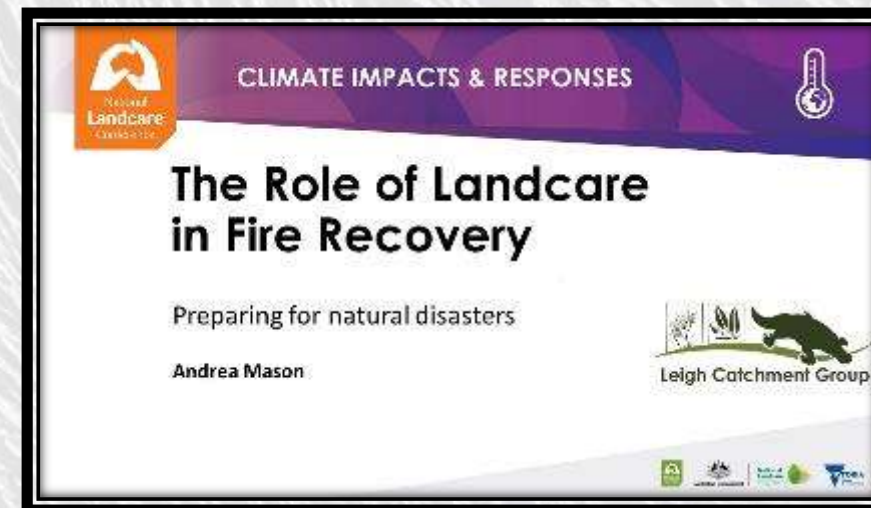


December 19, 2015

- ▶ 4460 hectares burnt
- ▶ 88 properties directly affected
- ▶ 12 Houses were lost
- ▶ Unknown wildlife and native vegetation loss
- ▶ Significant affect on local community



Landcare in a Crisis



Landcare's Strengths in Times of Crisis

- Landcare offers immediate and ongoing support for community and environmental resilience
- A network to draw strength and support from
- Clear understanding of the impact to local natural environment
- A point of contact for the Recovery team
- Coordinated approach to extension
- Conduit and buffer between agency staff and the community for property access

It is embedded in its people
– it is community driven

Scotsburn Phoenix Project

Facilitate	Facilitate community/landholder involvement in protecting, enhancing and rehabilitating the natural environment on their properties in the Scotsburn fire zone.
Facilitate	Facilitate improved property planning and sustainable agriculture practises.
Support	Support community engagement that promotes community and individual resilience.
Increase	Increase community interest and knowledge of the region's natural assets.
Provide	Provide opportunities to engage with other interest groups to increase the engagement and uptake of funding e.g. horse owners, gardeners and social groups.
Foster, build, maintain and strengthen	Foster, build, maintain and strengthen partnerships between landholders and Landcare.
Provide	Provide a catalyst for changing land management behaviour/practices.

Community action in Landcare

- you are not alone



Community action in Sustainability

Local small group



Regional Alliance



Local regional group for 10 years



State Government agency



- No State community level
- No National level
- No International level
- **NO SINGLE BRAND !!!**
- Partnerships/knowledge sharing/networks are ad hoc and project or issue based.

Community action – *Transition* Towns

Aims to reduce the urgent need to reduce carbon dioxide emissions, greatly reduce our reliance on fossil fuels and make wise use of precious resources is at the forefront of everything they do.

- respect resource limits and create resilience
 - promote inclusivity and social justice
 - adopt subsidiarity (self-organisation and decision making at the appropriate level)
 - pay attention to balance
 - are part of an experimental, learning network
 - freely share ideas and power
 - collaborate and look for synergies
 - foster positive visioning and creativity
-
- Yes - worldwide organisation
 - Mostly adopted at local government level but community driven
 - Yes – well branded!!!



But not focused on the issues that are affected in a crisis: natural environment, agriculture and communities.

The strength of the Landcare brand

- A stroke of brilliance – the ‘caring’ hands
- United under one banner
- Highly recognised brand in Australia
- “Landcare” - Recognised worldwide
- Bipartisan support in Australia
- Adopted by governments across the globe in various ways
 - The Landcare Approach
 1. Community based (for decisions and actions) as local groups
 2. Improving natural resource management for production and conservation
 3. Open to partnerships for information, funding and other opportunities
 4. Individual groups autonomous in their management (no hierarchy).



Japanese community action



Rebuilding community post tsunami

Rebuilding people post disaster



Rebuilding agriculture and saline soils post tsunami

Addressing village and traditional agriculture decline



Are you about to start/renew a new community action group focused on the environment and agriculture?

- Do you want to start up something on your own, that you can call your own and work in a closed circle?

OR

- Do you want that group to be highly connected and recognized both locally and worldwide?
- Do you want that group to be respected and supported by governments and their agencies?
- Do you want that group to enjoy the benefits of over 30 years of knowledge and resources that are freely available on line and willingly shared by your new 'family'?

Resilience - People and things that are resilient are able to recover easily and quickly from unpleasant or damaging events.

Self-reliance - the ability to do things and make decisions by yourself, without needing other people to help you.

**But that does not mean you
have to work ALONE**

A Sense of Belonging



So... if you are thinking of starting a community based action group focussed on the environment and needing to deliver on resilience???

My weapon of choice is:





leighcatchmentgroup.org
Alci.com.au
Findingnorth.net.au



@leighcatchgroup
@AusLandcareInt
@Findingnorth1



LeighCatchmentGroup
Australianlandcare

Finding North – Aspects of Sustainability



leigh_catchment_group
Amason_findingnorth

Self Reliance

- This session aims to pull together some of the key elements that we believe are necessary to achieve local self-reliance in communities anywhere on the world and how they are effective in delivering on this goal.
- Once identified, we would like to identify how these elements can be nurtured and how they can be introduced if found lacking?
- We would like to explore how the Landcare approach has been successful in facilitating local self-reliance and how it aligns with other local action groups and community models working in the same space.